

Carrier 30 RBS 080

Specifications

Brand	Carrier
Type	30 RBS 080
Product type	Air Cooled Chiller
Capacity kW	79
Capacity Tons	22,4
Refrigerant	Freon
Refrigerant Type	R410A
Weight in kg.	471
Sizes	2273x2136x1330 mm (LxWxH)
Remarks	Year of Manf: 23.02.2012

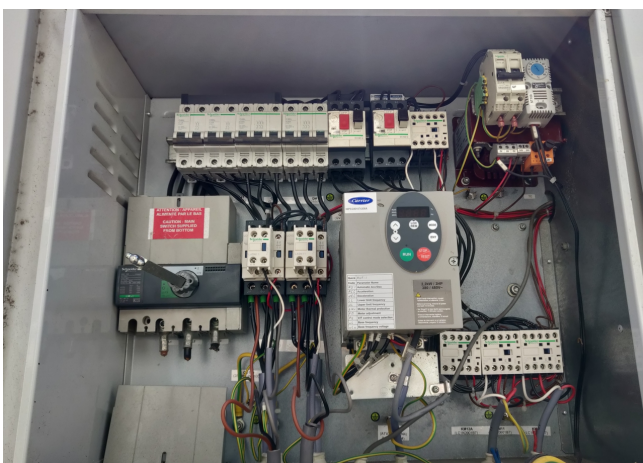
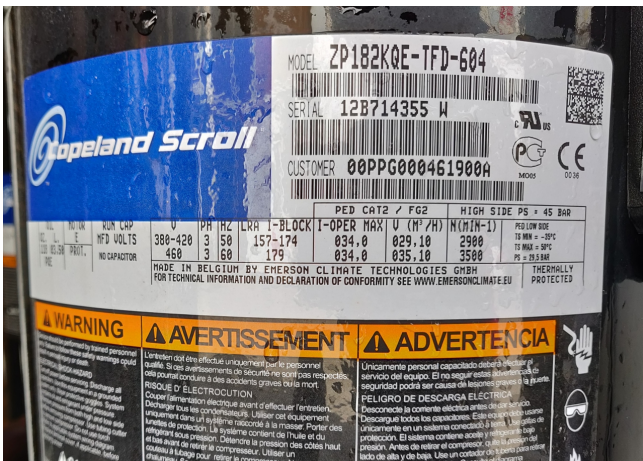


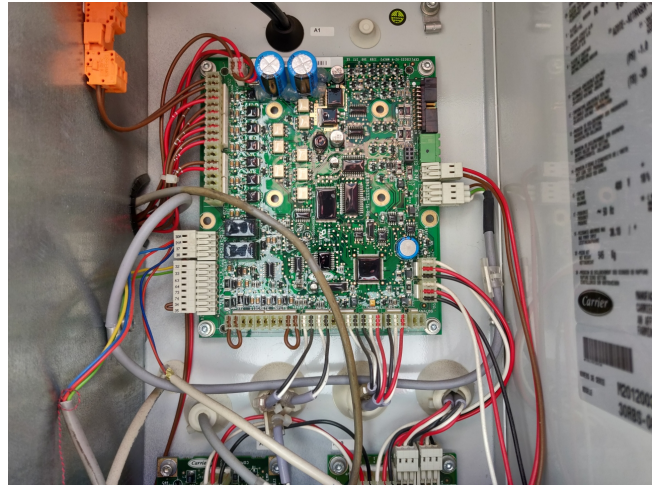
Description

Used Carrier 30 RBS 080

· Compressors: 2 pieces, type scroll, Copeland, ZP182KQE-TFD-604 · Refrigerant: R410A · Tons:22,4· Fans: 1 Piece · YOB: 23.02.2012 · Brand: Carrier · Model: 30 RBS 080-0436 **All components of this used chiller will be tested on good working, leak free condition condensing blocks, compressors, fan, control panel, etcetera). Choosing HOSBV means buying with warranty. We perform a industrial cleaning and rust spots will be covered. Also, we can arrange your shipment.







Carrier ERCD
BP 49 Route de Thil
0120 Montbuel (FRANCE)
Tel : 33 (0) 4 72 25 21 08
Fax : 33 (0) 4 72 25 34 02

**LISTE DE PIECES
SPARE PARTS LIST**

REF : 30RBS-080-0436-PE-
S/N : M2012003045

Date : 13/02/12 Page : 1 / 1

MODULE	PART	ITEM	PART NUMBER	QTY
HYDRAULIC ASSY	AIR PURGE	017	00PP00048300A	1
EVAPORATOR FINI	BRAZED COIL	038	00PP000106000A	1
SPHE ASSY	BRAZED PLATE HEAT EXCHANGER	001	00PP000471906A	1
DISCHARGE LINE	CHECK VALVE	007	--EC--390M-061-C-	2
SUCTION LINE	CHECK VALVE	004	--EC--390M-061-C-	1
SUCTION	CHECK VALVE	022	--EC--390M-062-C-	1
COMPRESSION A	CHECK VALVE	004	--EC--390M-062-C-	1
COMP ASSY	COMPRESSOR	001	00PP000441900A	2
VENTIL ASSY	COVER	008	00PP0000000200A	1
DRIER ASSY	DRIER SHELL	002	00PP000442100A	1
EXV ASSY	ELECTRONIC EXPA	002	00PP000479400A	1
PRECUTT FINI	EQUIPMENT ELEC	750	00PP0003975000A	1
HYDR. EVAP-	EXPANSION TANK	003	00PP000487000A	1
VENTIL ASSY	FAN PROPELLER	007	00PP0000001000A	1
HYDRAULIC ASSY	FILTER	003	30RA-411--382--EF	1
HYDRAULIC ASSY	FLEXIBLE	009	00PP000000301A	1
HYDRAULIC ASSY	HEATER	019	00PP0001079000A	1
ARMATURE	GRID	005	00PP000455300A	2
SPHE ASSY	HEATER	009	00PP000450000A	1
COMP ASSY	HEATER	003	00PP000450000A	1
HYDRAULIC ASSY	HP SENSOR	003	00PP000454800A	1
COMPRESSION A	LIQUID INDICATOR	003	00PP000454800A	1
LINE OIL	LIQUID INDICATOR	004	00PP000442000A	1
EXV ASSY	LIQUID INDICATOR	016	00PP000012100A	2
HYDRAULIC ASSY	LP SENSOR	008	00PP000444400A	1
VENTIL ASSY	MOTOR	001	30RA-504--672--EF	1
HYDRAULIC ASSY	RECHAUF SOUAV	001	--0M--12AQ-030--E-	1
SAFETY VALVE BP	SAFETY RELIEF VALVE	013	00PP000484900A	1
HYDRAULIC ASSY	SAFETY RELIEF VALVE	002	00PP0000000200A	1
COMPRESSION A	SWITCH	018	00PP000003401A	2
HYDRAULIC ASSY	TAP	003	00PP000010700A	1
SUCTION	TRANSDUCER	012	--XL--12AA-003--E-	1
COMP ASSY	VALVE	004	--XL--12AA-003--E-	1
	VALVE	001	00PP0004478000A	1
	VALVE	001	00PP0000008000A	1



